

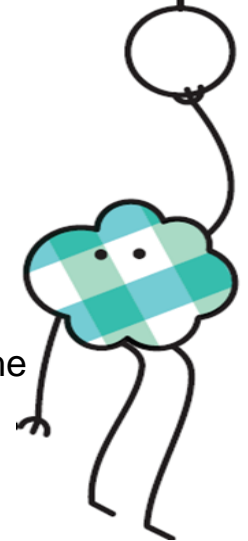


## Conditions of Entry & Privacy Notice

*Upon entering the Early Start Discovery Space I hereby agree to be bound by and comply with the following Conditions of Entry.*

*I understand that failure to comply may result in a request to vacate the facility.*

- All adults must be accompanied by at least one child
- For all groups, we suggest a minimum ratio of 1 adult per 5 children. School groups should follow the required ratio of teachers and caregivers approved by their principal
- All children must be accompanied and supervised by an adult at all times
- Running is not permitted in the Early Start Discovery Space
- Shoes must be worn
- Take reasonable care of your own health and safety and to ensure you and your child/children in your care do not adversely affect the safety of others or cause any damage to property at the Early Start Discovery Space. Visitors, (or in the case of children, the adult accompanying a child/children) will be liable for any damage caused to Early Start Discovery Space property and premises resulting from the visitor's conduct.
- I agree to listen to and follow the lawful directions and instructions of the Early Start Discovery Space employees and volunteers.
- Food and drink are only to be consumed in identified designated areas (Discovery Gardens & Café). Hot beverages are to be consumed **only** in the Café or the Discovery Gardens.
- Smoking is prohibited in the Early Start Discovery Space (including outside gardens) and on the University campus.
- Visitors must not consume, use or bring alcohol or illegal substances into the Early Start Discovery Space.
- In the event that attendance exceeds comfort capacity as deemed by management, visitors may be required to wait before gaining access.
- Please report all incidents and accidents to an Early Start Discovery Space employee immediately.
- Please dispose of all rubbish, recycling, nappies etc. in the appropriate bins provided.
- The Early Start Discovery Space is not responsible for any lost, stolen or left behind items. Lost property will be held for 6 weeks after which any unclaimed items will be donated to charity.
- We can't guarantee a germ-free environment – if you or your child/children become unwell during your visit, please notify an Early Start Discovery Space employee or volunteer.



## PHOTOGRAPHS AND RECORDINGS - PRIVACY NOTICE

- Visitors are welcome to take photographs and video recording of themselves and their children during their visit. Please respect the privacy of other visitors and refrain from taking photographs or video of other visitors without prior permission. Any photographs and video recordings taken by visitors should be for personal use only.
- Visitors may be photographed or have video footage of themselves and their dependents taken by Early Start Discovery Space employees. We will seek your permission to use photographs or recordings for specified purposes related to the Early Start Discovery Space and UOW in accordance with Early Start Discovery Space Privacy Protocols (which are available online at <http://earlystartdiscoveryspace.edu.au/wp-content/uploads/2015/05/Privacy-Protocols.pdf>) or please ask an Early Start Discovery Space employee to see a copy of the Early Start Discovery Space Privacy Protocols. Please notify an Early Start Discovery Space employee if you do not wish to be photographed or recorded during your visit
- For further information, please refer to UOW's privacy homepage at <http://www.uow.edu.au/about/privacy/index.html>
- The Early Start Discovery Space contains University learning spaces on the floor/s above which are accessible by University students and the general public. Should the actions of a third party student or member of the public make you feel uncomfortable, please contact a staff member immediately.



## REQUESTS AND RECOMMENDATIONS

- Wear comfortable clothing and flat soled shoes
- Please use 'inside' voices
- Our Crawlers' Beach experience is a special place for our youngest guests. Please encourage older children to respect this area
- Should a child or adult become lost, head to reception where a Discovery Space employee will assist